



# Board Meeting

August 21, 2013

# Agenda

- Welcome and Introductions
- President
- Treasurer
- Fundraising
- Communications
- Volunteers
- Facilities
- New Business

# Update

- LSC Update
  - Open Parent Representative Position
- New Building Engineer
  - Painting of 2<sup>nd</sup> Floor
  - Playground Equipment
  - Front Stairs
- Chicago Fire Filming
- Columbia College Sustainability
- “Friends of” Summit (Burr, Drummond, Priztker, Pulaski, *LaSalle II*)
- Gym Pads
- Hey Neighbor Street Fest w/MissioDei
- Fall Festival
- Popcorn Machine

# Profit & Loss Statement and Balance Sheet

July 2013

	Total
<b>Income</b>	
Donations	27,822.51
In-Kind Donations	4,699.59
Restricted Donations	0.00
<b>Total Income</b>	<b>\$ 32,522.10</b>
<b>Expenses</b>	
Advertising	0.00
Charitable Giving	7,836.00
Charitable Giving - In Kind	4,580.38
<b>Total Charitable Giving</b>	<b>12,416.38</b>
Credit Card Processing Fee	471.58
Fundraising Expense	1,145.75
Fundraising Exp. - In Kind	659.59
Insurance	0.00
Online Accounting Service	200.41
Promotional	0.00
Stationery & Printing	312.72
Supplies	
Taxes & Licenses	310.00
Web Services	363.00
<b>Total Expenses</b>	<b>\$ 15,879.43</b>
<b>Net Operating Income</b>	<b>\$ 16,642.67</b>
<b>Other Expenses</b>	
Miscellaneous	0.00
<b>Total Other Expenses</b>	<b>\$ 0.00</b>
<b>Net Other Income</b>	<b>\$ 0.00</b>
<b>Net Income</b>	<b>\$ 16,642.67</b>

	Total
<b>ASSETS</b>	
<b>Current Assets</b>	
<b>Bank Accounts</b>	
<b>PNC Checking</b>	
Non-Restricted Funds	25,247.10
Restricted Funds	5,000.00
<b>Total Bank Accounts</b>	<b>\$ 30,247.10</b>
<b>Accounts Receivable</b>	
Accounts Receivable (A/R)	0.00
<b>Total Accounts Receivable</b>	<b>\$ 0.00</b>
<b>Other Assets</b>	
In-Kind Donations	0.00
<b>Total Other Assets</b>	<b>\$ 0.00</b>
<b>Total Current Assets</b>	<b>\$ 30,247.10</b>
<b>TOTAL ASSETS</b>	<b>\$ 30,247.10</b>
<b>LIABILITIES AND EQUITY</b>	
<b>Liabilities</b>	
<b>Total Liabilities</b>	
<b>Equity</b>	
Retained Earnings	13,604.43
Net Income	16,642.67
<b>Total Equity</b>	<b>\$ 30,247.10</b>
<b>TOTAL LIABILITIES AND EQUITY</b>	<b>\$ 30,247.10</b>

# Donations by Month

Month	Number of Donations	Continuing Donations	New/One Time Donations	Corporate Grants/Matches	In-Kind Donations	Total Donations
January (2012)	2	\$110.00		\$0.00	\$0.00	<b>\$110.00</b>
February	6	\$200.00	\$575.00	\$0.00	\$0.00	<b>\$775.00</b>
March	4	\$225.00		\$0.00	\$0.00	<b>\$225.00</b>
April	4	\$250.00		\$0.00	\$0.00	<b>\$250.00</b>
May	5	\$275.00		\$0.00	\$0.00	<b>\$275.00</b>
June	9	\$425.00		\$5,000.00	\$0.00	<b>\$5,425.00</b>
July	6	\$300.00		\$0.00	\$0.00	<b>\$300.00</b>
August	11	\$250.00	\$250.00	\$0.00	\$0.00	<b>\$500.00</b>
September	12	\$375.00	\$350.00	\$0.00	\$0.00	<b>\$725.00</b>
October	19	\$675.00	\$1,165.00	\$0.00	\$0.00	<b>\$1,840.00</b>
November	15	\$945.00	\$1,122.00	\$0.00	\$0.00	<b>\$2,067.00</b>
December	13	\$725.00	\$271.24	\$0.00	\$540.38	<b>\$1,536.62</b>
<b>Total</b>	<b>106</b>	<b>\$4,755.00</b>	<b>\$3,733.24</b>	<b>\$5,000.00</b>	<b>\$540.38</b>	<b>\$14,028.62</b>
January (2013)	12	\$725.00	\$350.00	\$0.00	\$0.00	<b>\$1,075.00</b>
February	12	\$750.00	\$0.00	\$0.00	\$0.00	<b>\$750.00</b>
March	14	\$725.00	\$0.00	\$562.00	\$2,020.00	<b>\$3,307.00</b>
April	11	\$800.00	\$0.00	\$4,351.00	\$0.00	<b>\$5,151.00</b>
May	15	\$1,000.00	\$0.00	\$276.00	\$2,020.00	<b>\$3,296.00</b>
June	17	\$650.00	\$75.00	\$5,204.77	\$659.90	<b>\$6,589.67</b>
July	12	\$675.00	\$0.00	\$11,407.50	\$0.00	<b>\$12,082.50</b>
<b>Total</b>	<b>93</b>	<b>\$5,325.00</b>	<b>\$425.00</b>	<b>\$21,801.27</b>	<b>\$4,699.90</b>	<b>\$32,251.17</b>

# Fun Run Final Tally

<b>TOTAL COSTS</b>	
<b>Description</b>	<b>Amount</b>
Subscription Fee	\$799.00
Kick Off Supply Kit	\$450.00
Extra Class Posters	\$40.00
6% Processing Fee for Online Donations	\$754.50
FOP Flyers	\$197.74
Water Coolers	\$149.01
In-Kind Give-Aways (Forever Yogurt, Pretzels & Ipods)	\$812.41
<b>Total Costs</b>	<b>\$3,202.66</b>
<b>TOTAL DONATIONS</b>	
<b>Description</b>	<b>Amount</b>
Offline Donations	\$4,727.05
Online Donations	\$12,575.00
<b>Total Cash Donations</b>	<b>\$17,302.05</b>
Total Cash Donations	\$17,302.05
In-Kind Donations (Forever Yogurt, Pretzels, & Ipods)	\$812.41
<b>Total Donations</b>	<b>\$18,114.46</b>
Total Donations	\$18,114.46
Total Costs	\$3,202.66
<b>Net Proceeds</b>	<b>\$14,911.80</b>

# Fundraising

- Smaller Cocktail Receptions
  - In homes
  - 8-10 new people
  - Convey the importance of supplementing the school
- Looking for another parent volunteer

# Business Outreach

- List of supporting businesses
- Potential
  - Potbelly - UPDATE
  - Noodles & Company
  - Dentist
  - Degerberg Repeat



# Communications

- City Mini Golf
  - August 19-25
- Teacher Welcome Back Event
- Decals/Stickers
- T-shirts

# Technology

- Position Open
- FriendsOfPulaski.org Domain
  - Role-based aliases (ex. [president@friendsofpulaski.org](mailto:president@friendsofpulaski.org), [treasurer@friendsofpulaski.org](mailto:treasurer@friendsofpulaski.org), etc.)
- Dropbox versus Google Drive

# Volunteers

- New Families Tour – Friday, August 23, 2 - 3:30
- Bucktown Arts Fest – Saturday and Sunday, August 24 and 25
- NPN School Fair – Saturday, October 33
- Bucktown Apple Pie Fest – Sunday, October 14
- Pulaski Community Open House – Saturday, October 26
  
- Volunteers also needed to coordinate in-school activities(Norma)
  - Kiss and Go
  - Lunch and Recess
  - Library Assistance
  - Office Assistance
  - Teacher Treats

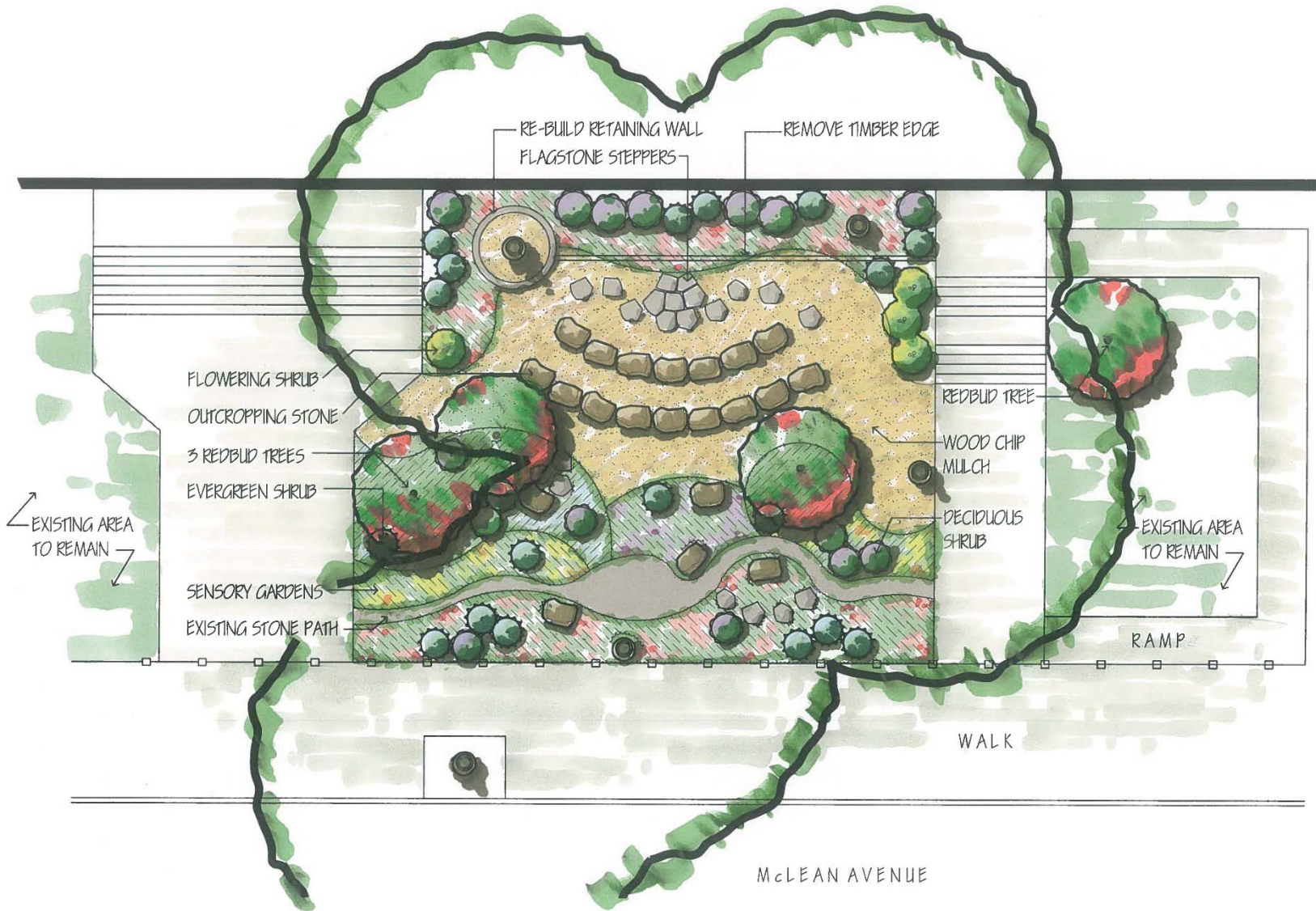
# Facilities

- Auditorium A/V – Starting Tomorrow
- Trash/Recycling Receptacles – September
- Outdoor Classroom – Friday



Green middle/top  
Yellow sides

# Outdoor Classroom

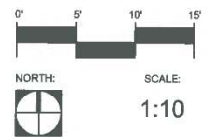


**CHRISTY WEBBER**  
LANDSCAPES  
www.christywebber.com  
2900 W. Ferdinand St.  
Chicago, IL 60622  
773.533.0477  
www.christywebber.com

PROJECT:  
**PULASKI INTERNATIONAL**  
2230 McLEAN AVE  
CHICAGO, ILLINOIS

DATE: ISSUED FOR:

08/09/13	CONCEPT DESIGN	TC



SHEET TITLE:  
**CONCEPT PLAN**

SHEET NUMBER:  
**L-1.0**



# Open Meeting Topics

- Next Meeting September 18, in the Pulaski Library

# Meeting Schedule for 2013-14

- July 24
- August 21
- September 18
- October 16
- November 20
- December 18
- January 15
- February 19
- March 19
- April 16
- May 21
- June 18